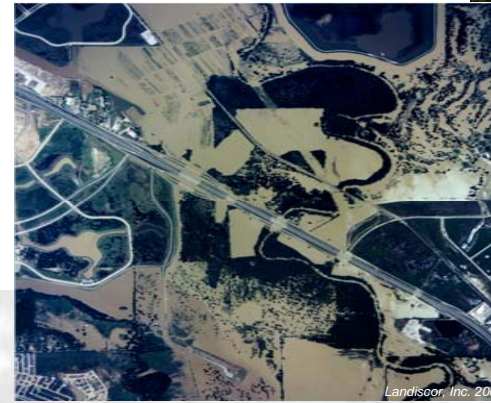


Hydraulics  
Hydrology  
General Civil  
Consulting



## Areas of Expertise

- Professional Floodplain Services
  - Reclamation
  - Management
  - Administration
  - Erosion Control
- GIS Services
- Hydraulics and Hydrology
- Dam Safety Evaluations
- Dam Break Analyses
- Watershed Studies
- Flood Control
- Water Resource Management
- Complex Drainage Analysis
- Drainage Remediation and Design
- Detention Analysis, Local, Regional
- Erosion Control
- Design and Construction Drawing Preparation
  - Drainage Facilities
  - Flood Control Facilities
  - General Civil Facilities
- Bridge Scour
- Writing Floodplain and Drainage Ordinances
- Expert Testimony
- Landfill Permit Applications-Preparation and Management
- Regulatory Coordination/ Regulatory Approvals
  - Municipal-Floodplain Fill Permits
  - Federal Emergency Management Agency—Map Revisions/Amendments
  - U.S. Army Corps of Engineers—Applications, Assistance, 404 Permitting
  - Environmental Protection Agency—SWPPP Documents
  - Texas Commission on Environmental Quality (was TNRCC)—Solid Waste Management Permits
  - Permitting of Dams



Elm Fork of the Trinity River  
Aerial View of Vista Ridge Golf Center during a flood



Vista Ridge Golf Center, CDC, LOMR, Lewisville

## Sample Projects

- FEMA Map Modernization, Various Texas Counties
- May Lane Storm Drainage Improvements, Grand Prairie, TX
- Vista Ridge Golf Center H&H, CDC and CLOMR, Lewisville, TX
- Barracks Renovation, Fort Polk, LA
- Cottonwood Creek Tributary Dam Break Analysis, Allen, TX
- Dam Safety Permit on Johnson Creek, Grand Prairie, TX
- Tanglewood Drainage Remediation, Farmers Branch, TX
- Sweetwater Creek Estates, 95-AC Residential Development, Midlothian, TX
- Southwest Nature Preserve Dam Safety Evaluation, Arlington, TX
- Camelot Landfill Permit Modifications 1 and 3, Lewisville, TX
- Pittman Creek Erosion Control, Plano, TX
- Sloan Creek Flood Study, Fairview, TX
- Hydraulics and Hydrology for Phase I Development, Waxahachie, TX
- Fairview Farms Detention Study, Plano, TX
- Park Plaza Condominiums Flood Control, Highland Park, TX
- Precision Landscape Management, Inc., New Offices, Farmers Branch, TX
- Many CLOMRs and LOMRs on projects of varying size and complexity



Flooding on Elm Fork



Pittman Creek Erosion Control, Plano



Stacy Road, LOMR, Allen



Southwest Nature Preserve Dam Safety Evaluation, Arlington

## Sample Clients

### Architects

- BRW Architects
- Calloway Architects
- Good, Fulton, & Farrell
- Mycoskie + McInnis + Associates
- PGAL

### Churches/Schools

- Ferris Avenue Baptist Church
- Friendship Baptist Church
- North Dallas Community Bible Fellowship
- Ovilla Road Baptist Church
- Parish Episcopal Day School

### Developers

- BG Development Group Inc.
- Centex Corporation
- Central Texas Home Builders Association
- Mady Developers Management
- Pavilion Development

### Engineers

- Frankfurt, Short, Bruza
- Half Associates
- Huitt-Zollars, Inc.
- PBS&J
- TranSystems

### Government Entities

- Federal Emergency Management Agency
- U.S. Army Corps of Engineers

### Industries

- Broadcast Works!
- Golfcraft Corporation/Hank Haney Golf
- International Airport Centers
- Pavestone
- Popeyes (POP Holdings, LP)

- Quebecor Printing Dallas, Inc.

- QuikTrip Corporation
- XTO Energy

### Municipalities

- Allen, TX
- Arlington, TX
- Collin County, TX
- Coppell, TX
- Dallas, TX
- Fairview, TX
- Farmers Branch, TX
- Garland, TX
- Grand Prairie, TX
- Mesquite, TX
- Plano, TX



Tanglewood Drainage Remediation, Farmers Branch

## Primary Software

- ArcView 8.3, 9.1, and 9.2
- Spatial Analyst
- 3D Analyst
- ArcInfo
- xpstorm
- ArcGIS
- Microstation XM
- HEC-RAS
- HEC-2
- HEC-HMS
- AutoCAD Land Desktop (LDD 2008)
- HEC-1
- Streamline Technologies' ICPR
- TerraModel
- WSP2
- WSP4
- TxDOT's THYSYS
- WINSTORM
- TR-20
- TR-55
- DAMS2
- FLOODWAV
- NUDALLAS
- MS Excel
- EPA's SWMM



### O'BrienEngineering, Inc.

has been providing quality engineering solutions in Texas for over twenty years, since 1987.

O'Brien Engineering, Inc., a Veteran Owned

Small Business (VOSB), provides general civil engineering services with focused specialization in the areas of hydrology and hydraulics, floodplain administration, and regulatory permitting.

OEI's experience has been successfully demonstrated on flooding and drainage projects in Texas, Oklahoma, and Louisiana; our expertise has allowed us to develop a substantial resource of affiliations with professionals in virtually every aspect of civil engineering and industry.

#### O'Brien Engineering, Inc., Corporate and/or Individual Affiliations

- SAME (Society of American Military Engineers)
- TFMA (Texas Floodplain Management Association)
- TSPE (Texas Society of Professional Engineers)
- OK PELS (Oklahoma Professional Engineers & Land Surveyors)
- ASDSO (Association State Dam Safety Officials)
- ACEC (American Council of Engineering Consultants)
- TCEC (Texas Council of Engineering Consultants)
- Texas Department of Transportation
- SMPS (Society of Professional Marketing Services)
- UT DOPL (Utah Division of Occupational & Professional Licensing)

O'Brien Engineering, Inc. 14900 Landmark Boulevard, Suite 530 Dallas, Texas 75254 Phone: 972-233-2288 Fax: 972-233-2818  
[www.OBrienEng.com](http://www.OBrienEng.com) E-mail: [info@OBrienEng.com](mailto:info@OBrienEng.com) or [jobs@OBrienEng.com](mailto:jobs@OBrienEng.com)